



FLAT DISPLAY TECHNOLOGY

10.4" Open Frame Monitor

Model Number: LOF1044 xx



This product is RoHS compliant

SPEC No.: SAS-0910005

Version: 0.0

Issue Date: October 21 2009

1. Introduction:

1.1 About the Product

The LOF1044xx 10.4" Open Frame Monitor series are rugged, high performance Industrial LCD Monitors, designed for commercial and industrial applications, such as kiosks, arcade games, ATM Machines, aviation simulators, military, medical, marine, security, industrial equipment, and instrumentation equipment. This product can provide high brightness and contrast to achieve better viewing effect.

1.2 Features

- 10.4 inch SVGA Active Matrix Color TFT LCD Monitor
- High Contrast 400:1 Typical
- Recommend resolution:800x600(SVGA)
- OSD controls: Allow on-screen adjustments of Brightness, Contrast, RGB Auto Color Balance, H-Position, V-position
- Multi system Video Input
- Signal loss backlight will be off / signal feed again backlight will be on
- Quick and easy integrations for Client solutions
- Universal AC Power input and auto detection video system.
- Touch screen

FLAT DISPLAY TECHNOLOGY

■ LOF1044xx V0.0



2. Contents

Contents Index	Page
1. Introduction	1
1.1 About the product	1
1.2 Features	1
2. Contents	2
3. Specifications	3
4. Ordering Information	4
5. VGA Input Format	5
6. Mechanical Drawing	6-12
6.1 LOF104400-000R	6
6.1 LOF10445A-000R	7
6.1 LOF10445B-000R	8
6.1 LOF104400-010R	9
6.1 LOF10445A-010R	10
6.1 LOF10445B-010R	11
6.1 LOF104400-060R	12
7. Packing List	13
8. Installing the Monitor	14
8.1 Power Cable Connection	14
8.2 VGA Signal Cable Connection	14
8.3 Video / S-Video Cable Connection	14
8.4 Switch On The Power	14
9. OSD Control	15-18
9.1 Menu Operation	15-17
9.2 Operations	18
10. Trouble Shooting	19

3. Specifications

Parameter	Specifications	Unit	Remark
Model Name	LOF1044xx		
Screen Size	10.4" (diagonal)	inch	
Display Format	800 x (R.G.B) x 600	dot	
Display Color	262,144 colors		
TFT-LCD Active Area	211.2 (H) x 158.4 (V)	mm	
Pixel Pitch	0.264 (H) x 0.264 (V)	mm	
Contrast Ratio	400:1(Typ.)		
Brightness	400(Typ.)	Cd/m ²	
Viewing Angle	-70~70(H); -60~50(V)(Typ.)	deg	
Input/Output Interface	Video and S-video / D-Sub 15 pin female for VGA / USB (A Type)or RS-232 (DB9 Female) for Touch Screen Driver (Option)		
Power Source	100-240V _{AC} 50-60Hz, Universal / +12V _{DC} @ 3A		
Power Consumption	< 6.9W		
Touch Screen Controller	5 wire Resistive Driver USB/ RS232 (Option)		
Operating Temperature	-20~70 (With Touch -10~+70)	°C	
Storage Temperature	-20~80	°C	
LED Life Time	30000(Typ)	hr	

FLAT DISPLAY TECHNOLOGY

■ LOF1044xx V0.0 

4. Ordering Information

Parameter	LOF104400-000R	LOF10445A-000R	LOF10445B-000R	Unit
CVBS	1	1	1	
S-Video	1	1	1	
VGA	SVGA (800x600)	SVGA (800x600)	SVGA (800x600)	
Touch Panel Type	-	5W Resistive	5W Resistive	
Touch Screen Interface	-	USB	RS232	
Outline Dimension	265.6(W) x 225.6(H) x 40(D)	265.6(W) x 225.6(H) x 40(D)	265.6(W) x 225.6(H) x 40(D)	
Weight (Include Accessory)	2.09(2.89)	2.11(2.19)	2.11(2.19)	Kg
Frame Material (Color)	Iron (Silver)	Iron (Silver)	Iron (Silver)	

Note: Weight \pm 10%

Parameter	LOF104400-010R	LOF10445A-010R	LOF10445B-010R	Unit
CVBS	-	-	-	
S-Video	-	-	-	
VGA	SVGA (800x600)	SVGA (800x600)	SVGA (800x600)	
Touch Panel Type	-	5W Resistive	5W Resistive	
Touch Screen Interface	-	USB	RS232	
Outline Dimension	265.6(W) x 225.6(H) x 40(D)	265.6(W) x 225.6(H) x 40(D)	265.6(W) x 225.6(H) x 40(D)	
Weight (Include Accessory)	2.09(2.89)	2.11(2.19)	2.11(2.19)	Kg
Frame Material (Color)	Iron (Silver)	Iron (Silver)	Iron (Silver)	

Note: Weight \pm 10%

Parameter	LOF104400-060R	Unit
CVBS	1	
S-Video	-	
VGA	SVGA (800x600)	
Touch Panel Type	-	
Touch Screen Interface	-	
Outline Dimension	265.6(W) x 225.6(H) x 40(D)	
Weight (Include Accessory)	2.09(2.89)	Kg
Frame Material (Color)	Iron (Silver)	

Note: Weight \pm 10%

FLAT DISPLAY TECHNOLOGY

■ LOF1044xx V0.0 

5. VGA Input Format

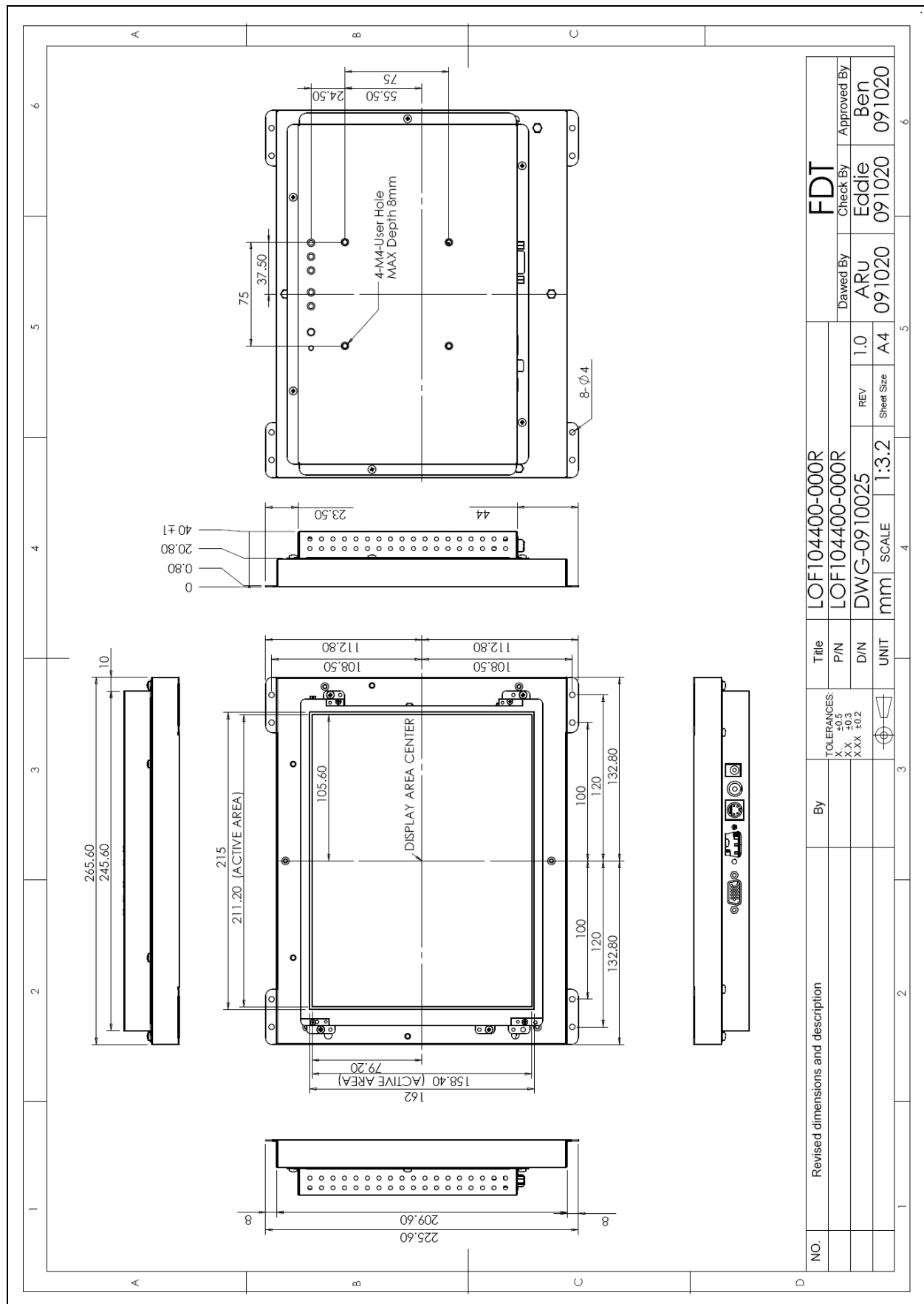
	Mode	Family	Resolution	H-Freq. (KHz)		V-Freq. (KHz)	
1	Mode 3	PC	640x480	31.47	(-)	59.9	(-)
2	Mode 4	VESA	640x480	37.86	(-)	72.8	(-)
3	Mode 5	VESA	640x480	37.50	(-)	75.0	(-)
4	Mode 6	VESA	800x600	35.16	(+)	56.3	(+)
5	Mode 7	VESA	800x600	37.88	(+)	60.3	(+)
6	Mode 8	VESA	800x600	48.08	(+)	72.2	(+)
7	Mode 9	VESA	800x600	46.88	(+)	75.0	(+)
8	Mode 10	VESA	1024x768	48.36	(-)	60.0	(-)
9	Mode 11	VESA	1024x768	56.48	(-)	70.1	(-)
10	Mode 12	VESA	1024x768	60.02	(+)	75.0	(+)
11	Mode 13	VESA	1280x1024	63.98	(+)	60.0	(+)

FLAT DISPLAY TECHNOLOGY

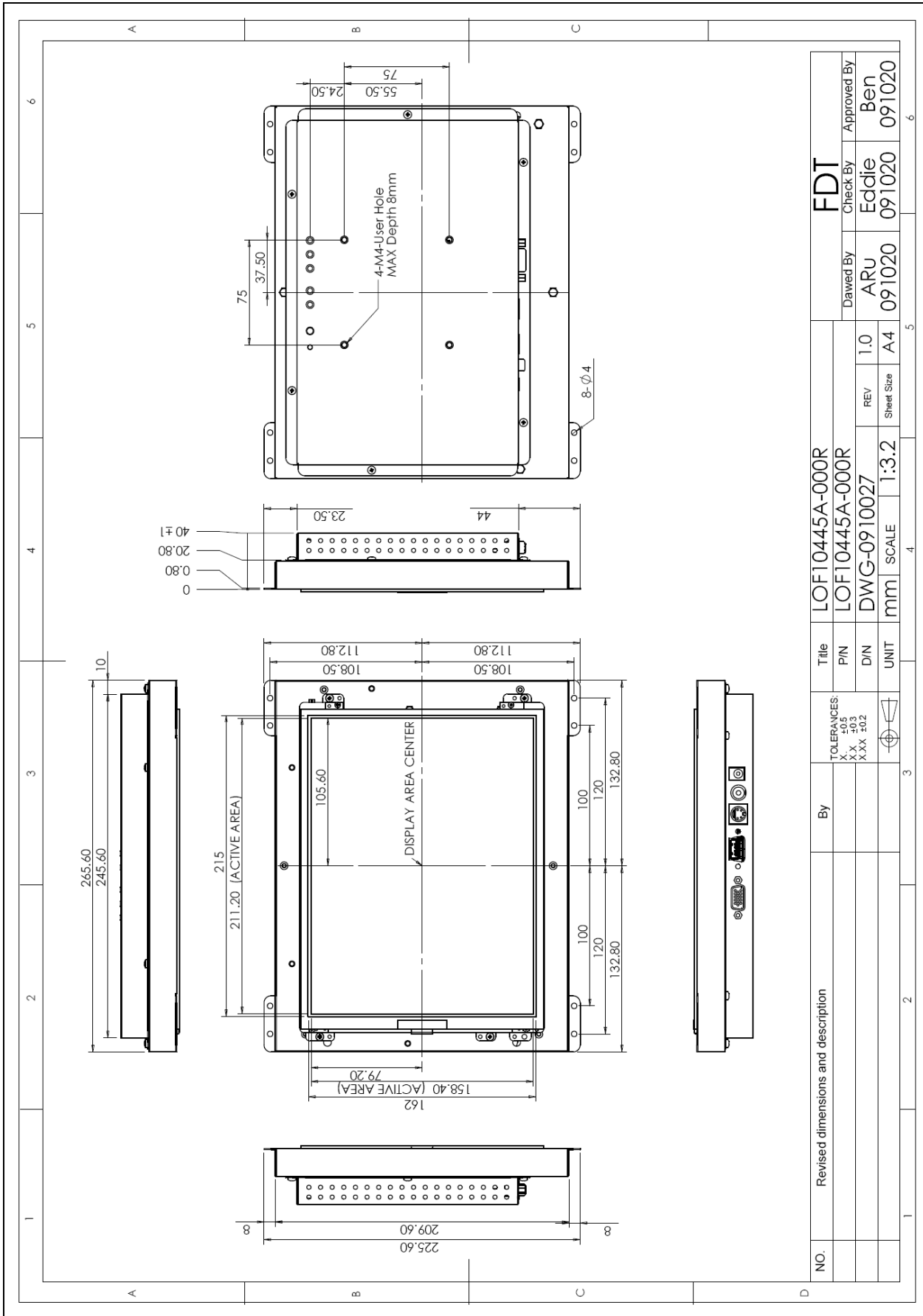


6. Mechanical Drawing

6.1 LOF104400-000R



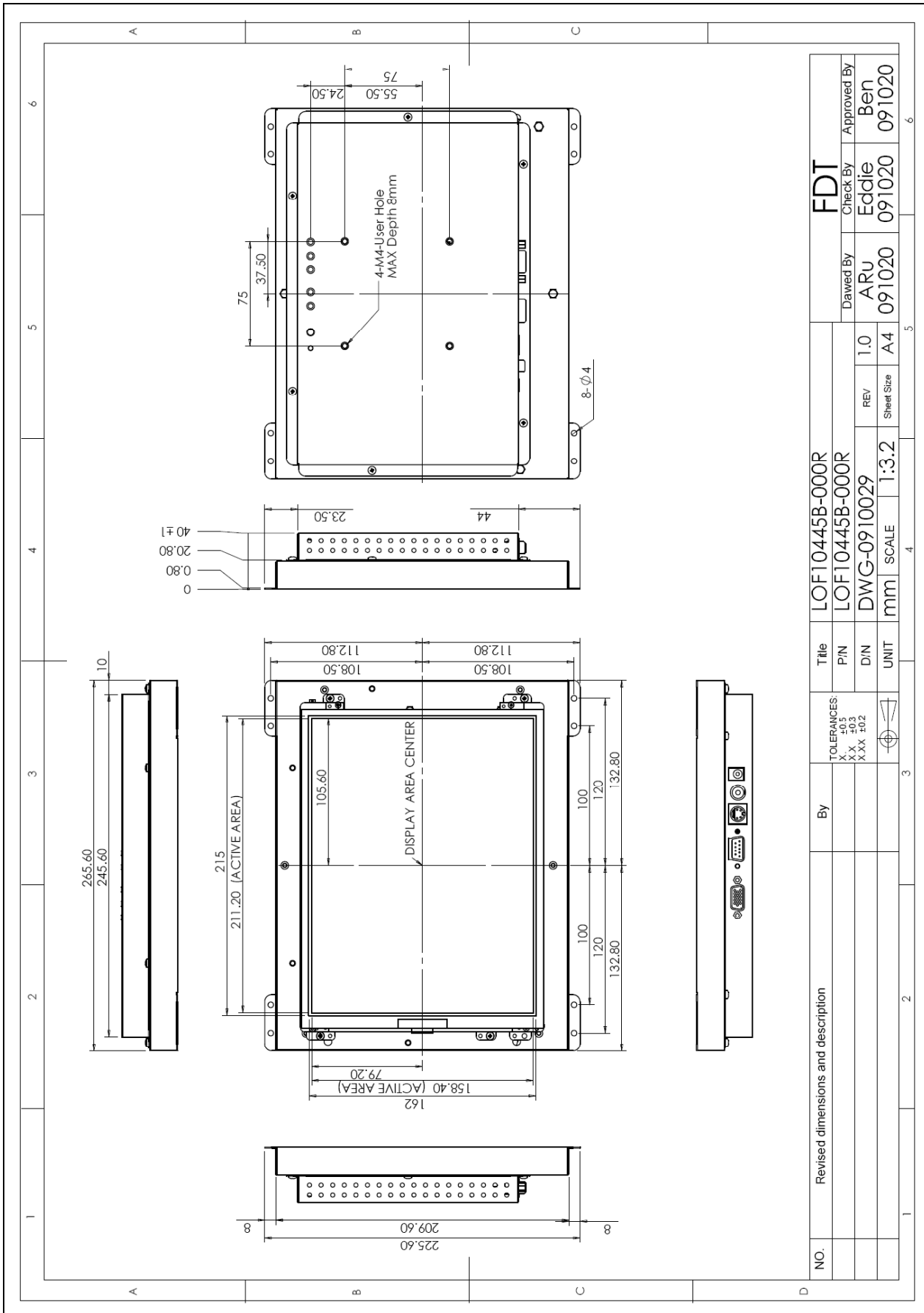
6.2 LOF10445A-000R



FLAT DISPLAY TECHNOLOGY

LOF1044xx V0.0

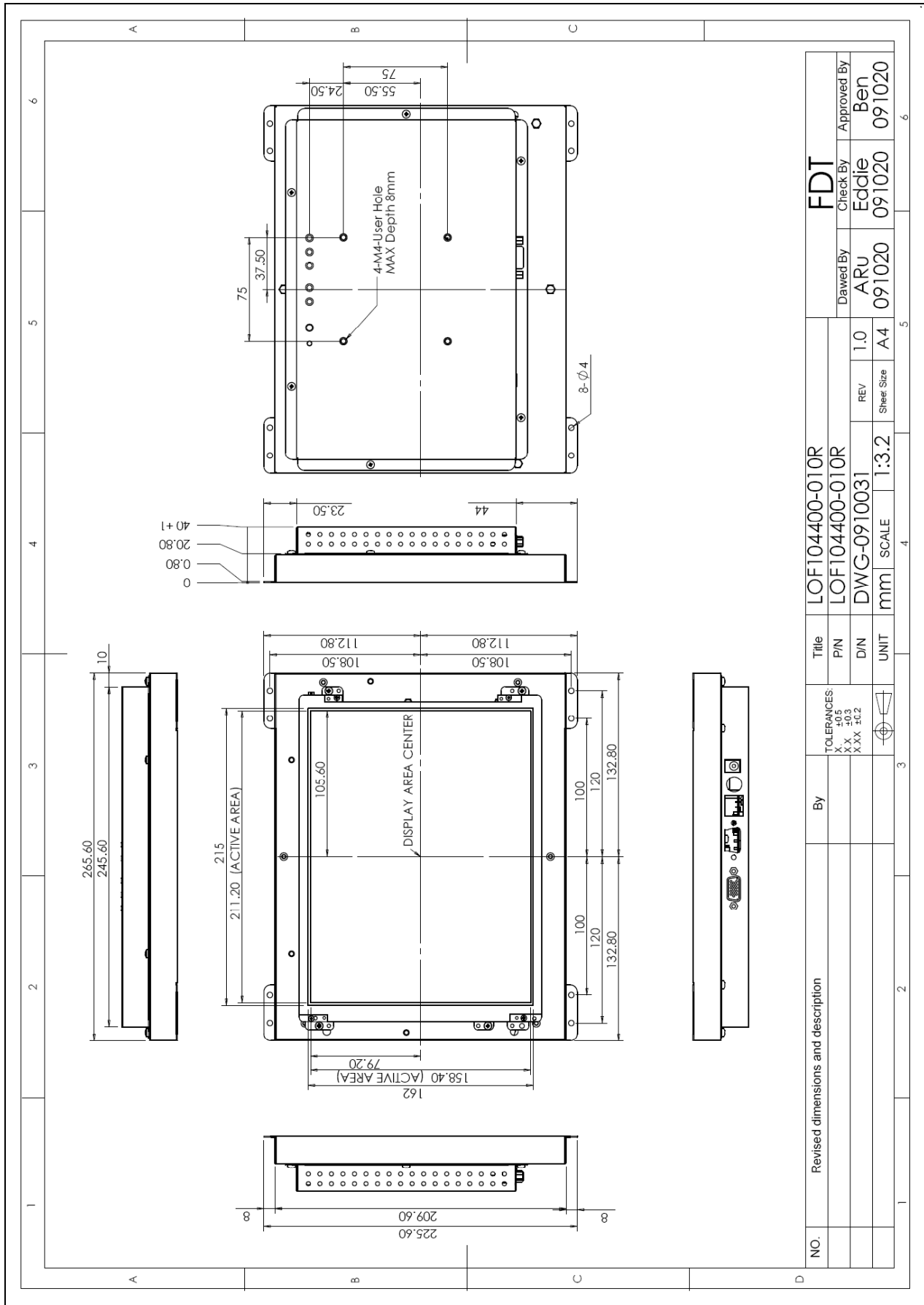
6.3 LOF10445B-000R



FLAT DISPLAY TECHNOLOGY

■ LOF1044xx V0.0 

6.4 LOF104400-010R

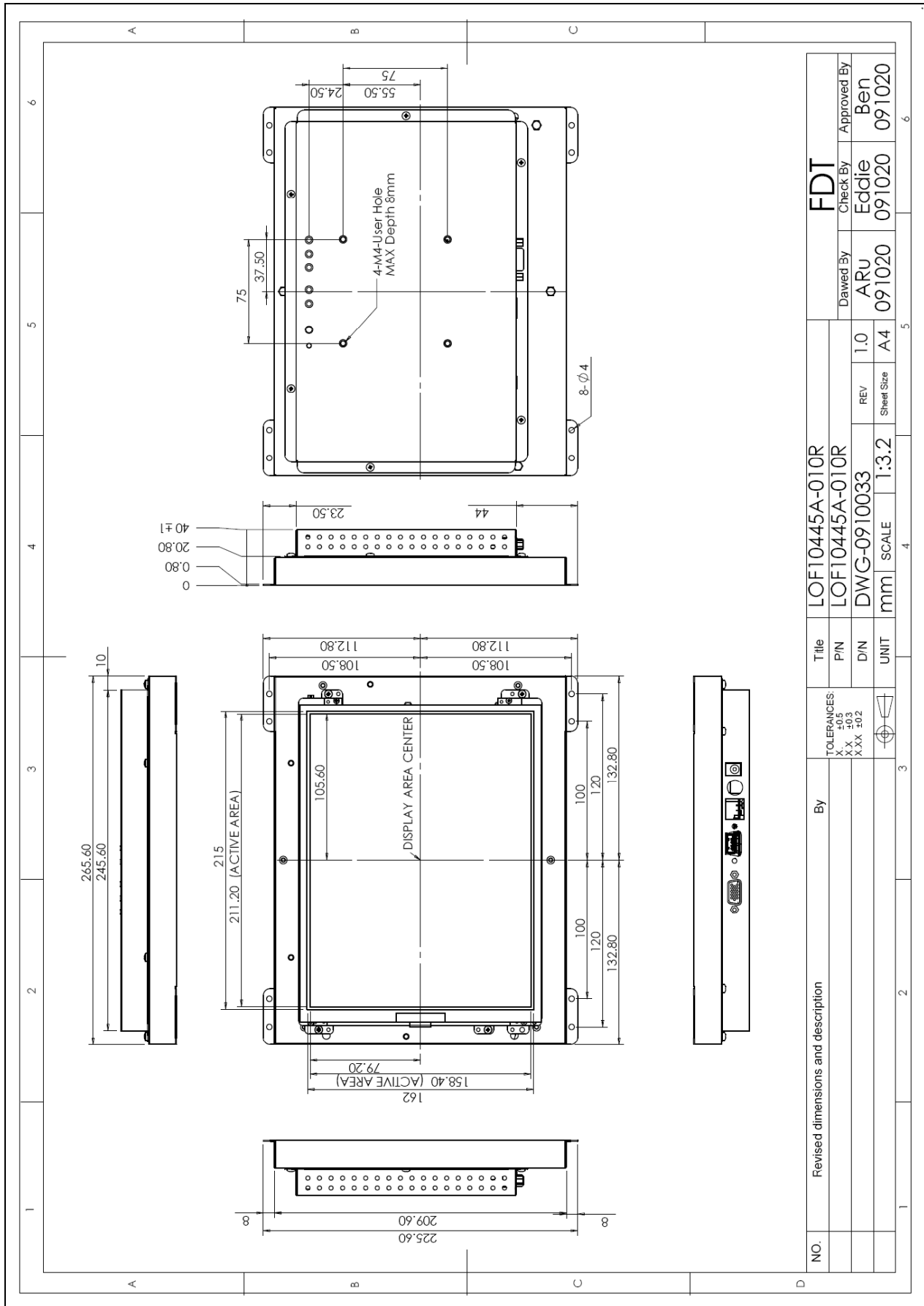


NO.	Revised dimensions and description	By	TOLERANCES: ±0.5 XX XXX ±0.2	Title		Dated By		Checked By		Approved By	
				LOF104400-010R	LOF104400-010R	ARU	Eddie	Ben	091020	091020	091020
				D/N	DWG-0910031	REV	1.0	Sheet Size	A4	Scale	1:3.2
				UNIT	mm	SCALE	1:3.2				

FLAT DISPLAY TECHNOLOGY

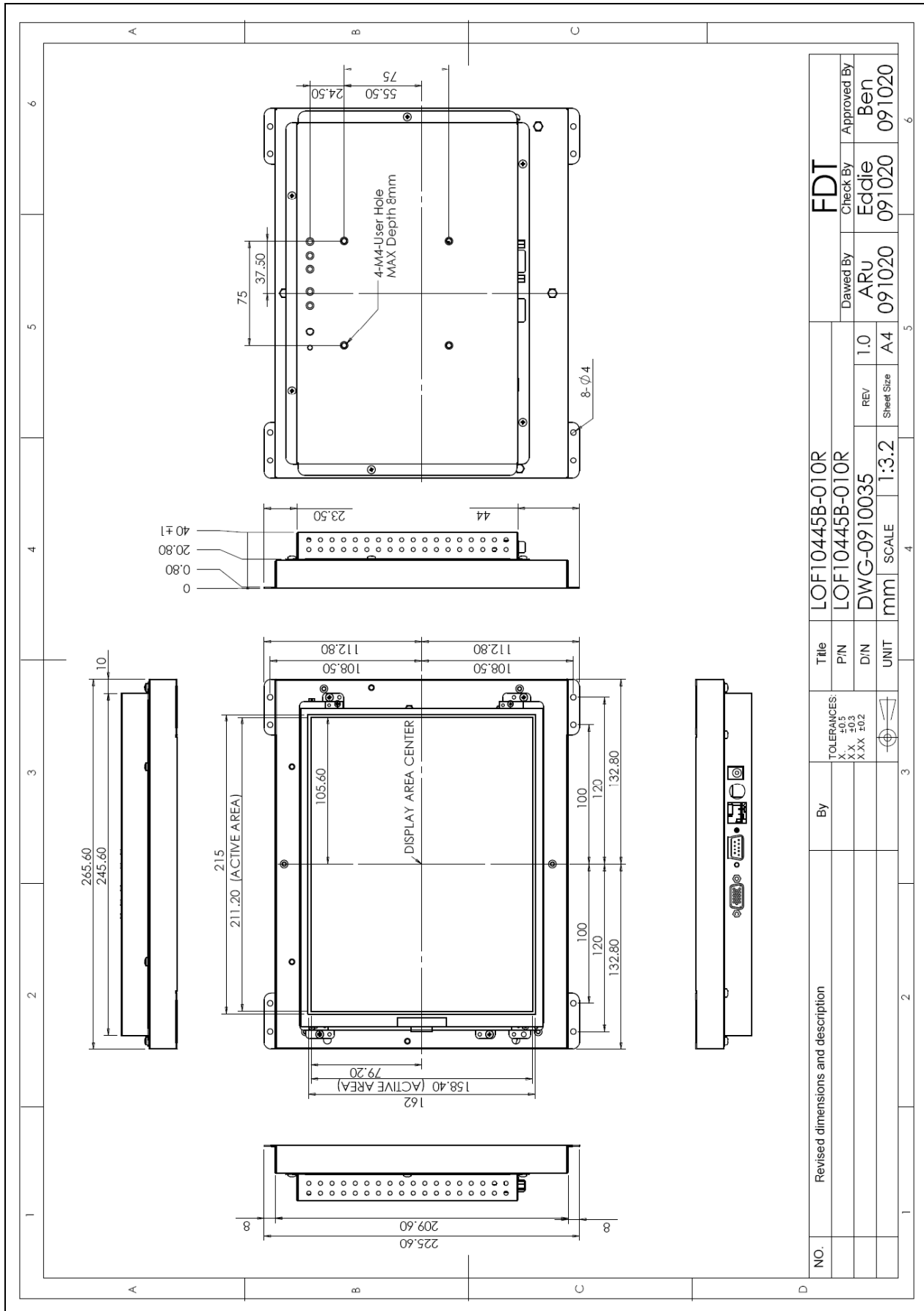
■ LOF1044xx V0.0

6.5 LOF10445A-010R



NO.	Revised dimensions and description	By	TOLERANCES: XX ±0.3 XXX ±0.2	UNIT	mm	SCALE	1:3.2	REV	1.0	Sheet Size	A4	DWG	DWG-0910033	PIN	LOF10445A-010R	Title	LOF10445A-010R	FDT					
																		Drawing By	ARU	Check By	Eddie	Approved By	Ben
																			091020		091020		091020

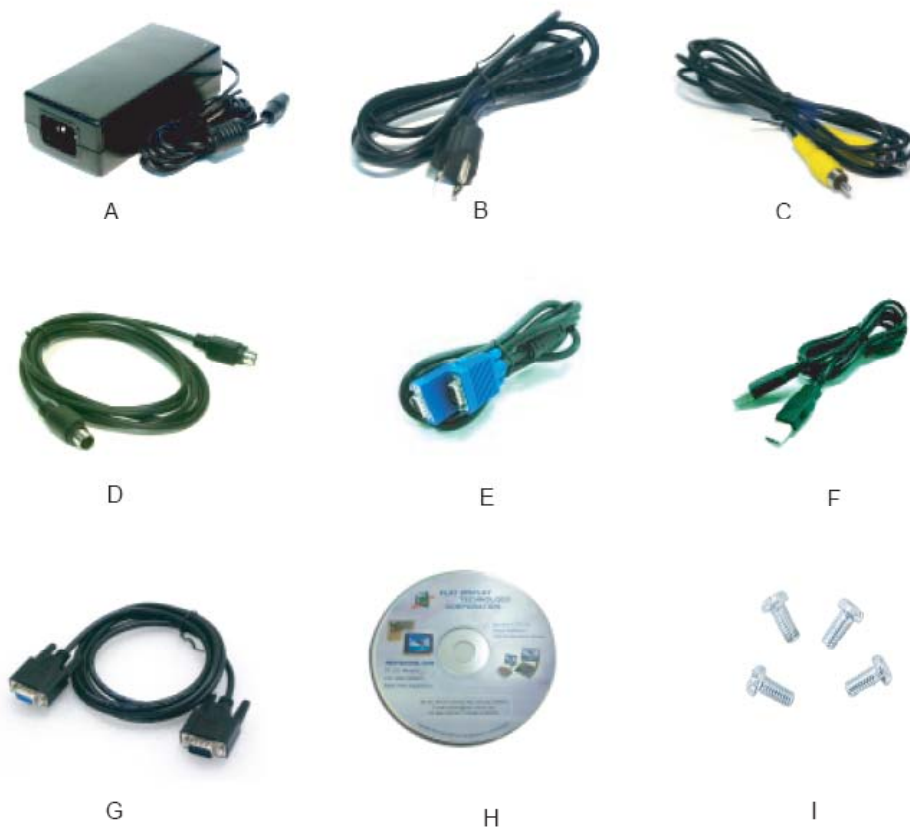
6.6 LOF10445B-010R



NO.	Revised dimensions and description	By	Title		Dated By		Check By		Approved By	
			LOF10445B-010R	LOF10445B-010R	ARU	Eddie	Ben	ARU	Eddie	Ben
	TOLERANCES: XX ±0.3 XXX ±0.2		PIN	DIN	REV	Sheet Size	Scale	REV	Sheet Size	Scale
			DWG-0910035	1:3.2	1.0	A4	091020	091020	091020	091020
			UNIT	SCALE	mm	1:3.2				

7. Packing List

Before you begin installing the Open Frame Monitor, please make sure that the following materials have been shipped:



- A. AC to DC Adapter (100-240V_{AC} 50-60Hz to +12V_{DC} @ 3A)
- B. Power Cord
- C. Video Cable (LOF1044~~xx~~-000R & LOF1044~~xx~~-060R Only)
- D. S-Video Cable (LOF1044~~xx~~-000R Only)
- E. VGA Cable (LOF1044~~xx~~-000R & LOF1044~~xx~~-060R Only)
- F. USB Cable (LOF10445A Only)
- G. RS-232 Cable (LOF104S5B Only)
- H. Touch Screen Driver CD Disk (LOF10445A & LOF10445B Only) / User Manual
- I. M4x8 Screw x4 pcs

If any of these items are missing or damaged, contact your distributor or sales representative immediately.

8. Installing the Monitor

8.1 Power cable connection:

Connect the power cord to the AC outlet, and connect the power to the monitor through the AC/DC adapter.

8.2 VGA signal cable connection:

Plug one end of the 15-pin signal cable to the VGA connector at the rear of the PC system and the other end to the Open Frame monitor.

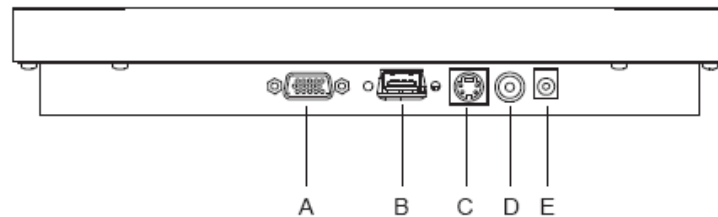
Secure the connectors with the screws on the cable connector at both ends.

8.3 Video / S-Video Cable connection:

If required, connect Video / S-Video Cable from the Open Frame Monitor to the DVD or CCD Camera.

8.4 Switch on the power:

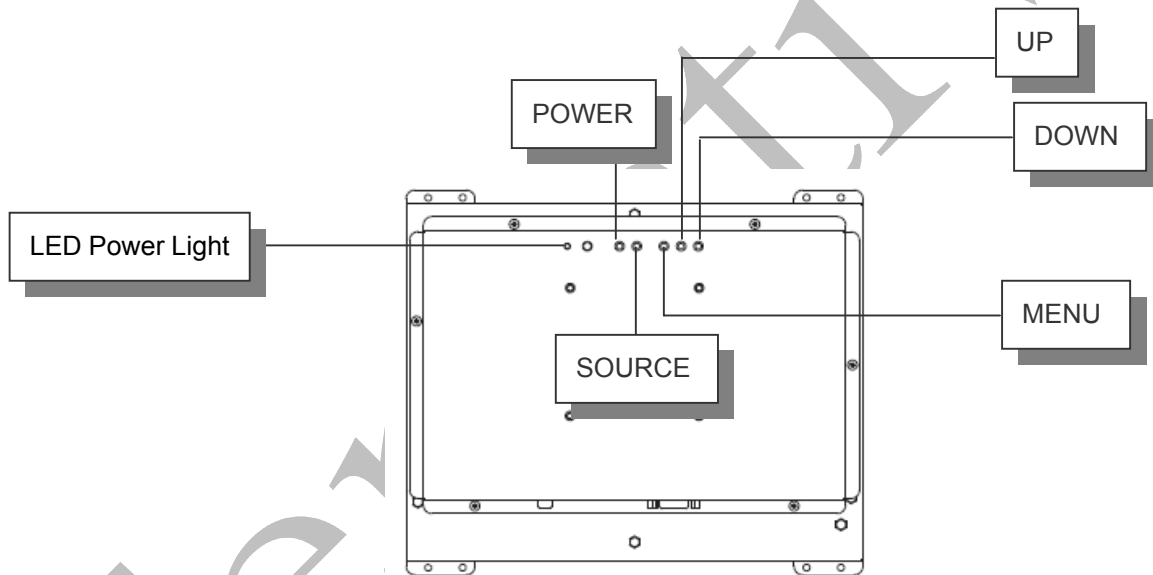
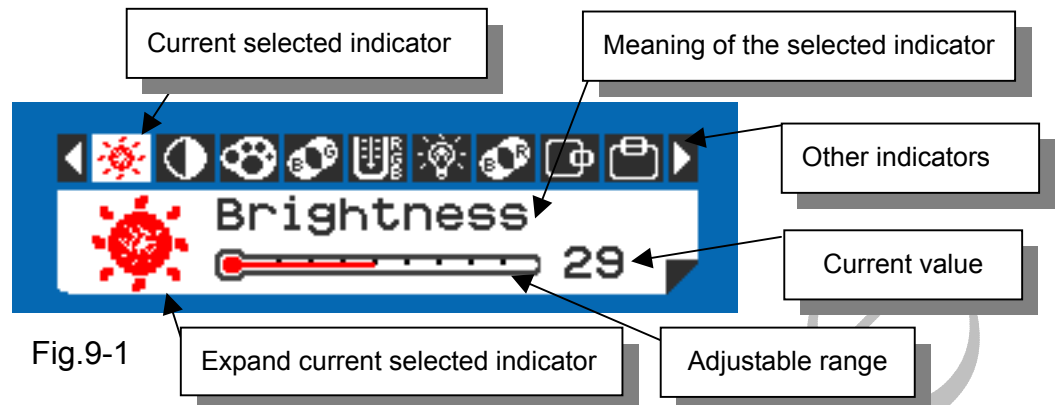
Switch on the power switch on the rear cover of the Open Frame Monitor.



- A. VGA D-sub 15 (Female)
- B. USB / RS-232 Port (For Controller)
- C. S-Video (Y/C Video) In
- D. Video (CVBS) In
- E. DC-In (+12V_{DC} The DC jack core is positive)

9. Key Function by OSD

9.1 Menu Operation



Operations of key board :

1. To navigate the menu, press [MENU]. (Fig.9-1)
2. The indicator lighting up in white color is the selected adjustment item.
3. To Next Item of the menu, press [MENU] again.
4. The operations below are only available when "Menu" is started.
5. Press [UP] / [DOWN] to adjust the value of the selected item.

FLAT DISPLAY TECHNOLOGY

■ LOF1044xx V0.0



Overview of the menu :

Firmware must be \geq VER 0.26
















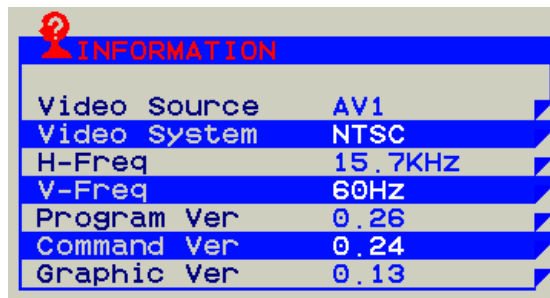
Indicator	Meaning	Adjustable range	For	Remark
	Brightness	0 ~ 64	AV / S-Video / VGA	Adjust-Bar
	Contrast	0 ~ 64	AV / S-Video / VGA	Adjust-Bar
	Color	0 ~ 64	AV / S-Video	Adjust-Bar
	Tint	0 ~ 32	AV / S-Video	Adjust-Bar
	Sharpness	0 ~ 16	AV / S-Video	Adjust-Bar
	Dimmer	0 ~ 9	AV / S-Video / VGA	
	Color Tone	Normal / Warm / Cool	AV / S-Video / VGA	
	H-Position	-25 ~ +25	AV / S-Video / VGA	Balance-Bar
	V-Position	-10 ~ +10	AV / S-Video / VGA	Balance-Bar
	Auto		VGA	
	Scan	Over Scan / Under Scan	AV / S-Video / VGA	
	Information		AV / S-Video / VGA	Fig.9-2
	Setup		AV / S-Video / VGA	Fig.9-3
	Factory Set		AV / S-Video / VGA	
	Exit		AV / S-Video / VGA	

Fig.9-2



FLAT DISPLAY TECHNOLOGY

■ LOF1044xx V0.0 

Setup Menu :



Fig.9-3

Indicator	Meaning	Adjustable range	Function	Remark
	Show Status	ON / OFF	Show signal status.	ON: Show OFF: Hidden
	Blue Screen	ON / OFF	If loss signal will put on the blue or black screen.	ON: Blue OFF: Black
	Auto Power On	ON / OFF	Power input module will be auto turn on.	ON: Auto OFF: Manual
	Auto Saving	OFF / 3s / 5s / 15s / 30s	If signal lost over setting times will be power off.	ON: Auto OFF: Normal
	Detect Source	ON / OFF	Auto detection which source is existence and change.	ON: Auto OFF: Normal
	Return			

Note : VGA only type don't have Detect Source function.

9.2 Operations

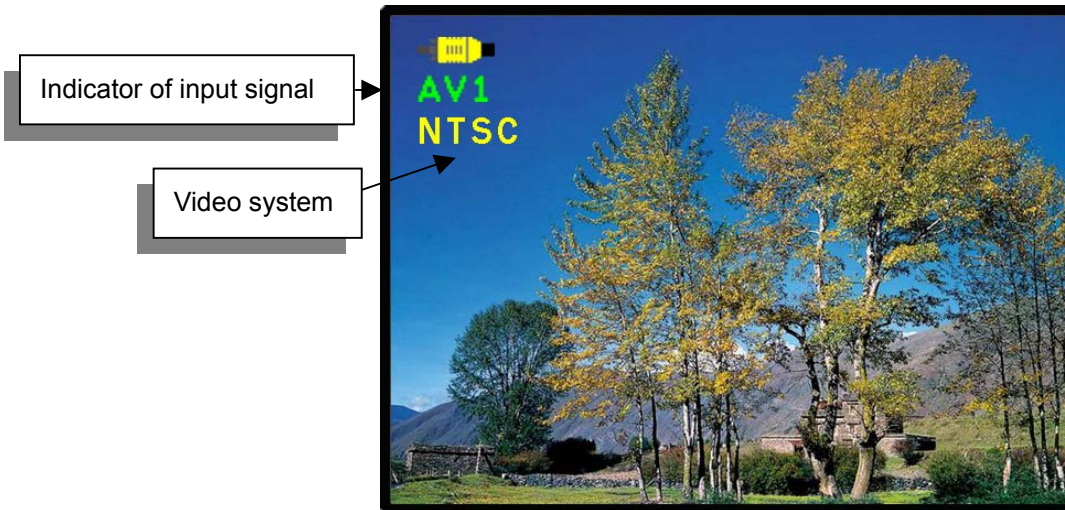





Fig.9-4

[Power] : Monitor power on / off

[Source] : Input signal switch

Overview of input signals :

Indicator	Input signal	Interface	Video system
	AV1	Composite	NTSC / PAL / SECAM
	S-Video1	Y/C	NTSC / PAL / SECAM
	VGA	Analog RGB	640x480_60 / 800x600_60 / 1024x768_60 / 1280x1024_60

10. Trouble Shooting

If experiencing trouble with the monitor, or it fails to operate correctly, please refer to the following instructions before calling for repairs.

Condition	Check Point
1. The picture does not appear	<ul style="list-style-type: none">● Check to see that all the I/O and power cables is firmly seated in the socket.● Check the Power LED is Lighting When the monitor was turned ON.● Check if the brightness control is at the appropriate position, not at the minimum.
2. The screen is not synchronized	<ul style="list-style-type: none">● Check if the I/O signal cable is firmly seated in the socket.● Check if the output level matches the input level.● Make sure the signal timings of the computer system are within the specification of the monitor.
3. The position of the screen is not in the center	<ul style="list-style-type: none">● Adjust the H-position, and V-position, or perform the auto adjustment Or Factory Set.
4. The screen is too bright (too dark).	<ul style="list-style-type: none">● Check if the brightness or contrast control is at the appropriate position, not at the Maximum (Minimum).
5. The Screen is shaking or waving	<ul style="list-style-type: none">● Press the Auto adjustment control to adjust. Moving all objects which emit a magnetic field such as motor or transformer, away from the monitor. Check if the specific voltage is applied.● Check if the signal timing of the computer system is within the specification of monitor.

If you are unable to correct the fault by using this chart, stop using your monitor and contact us.